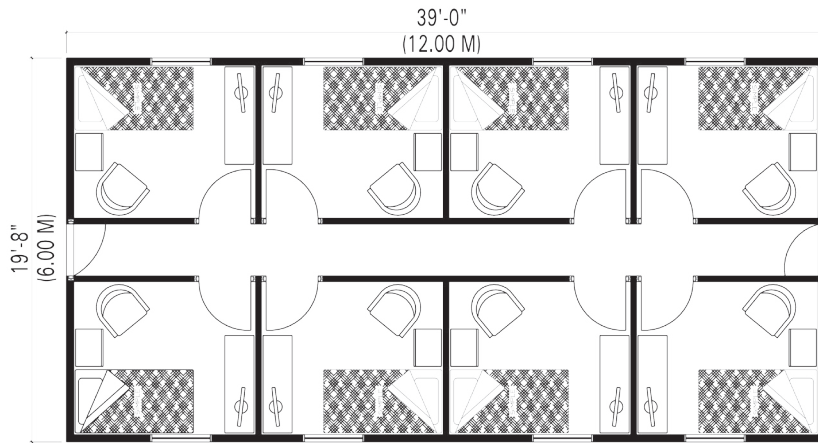
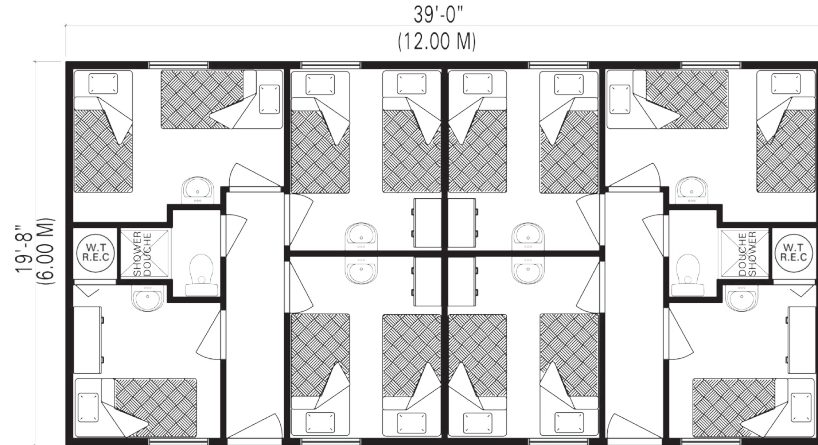


Habitaflex Dormitories

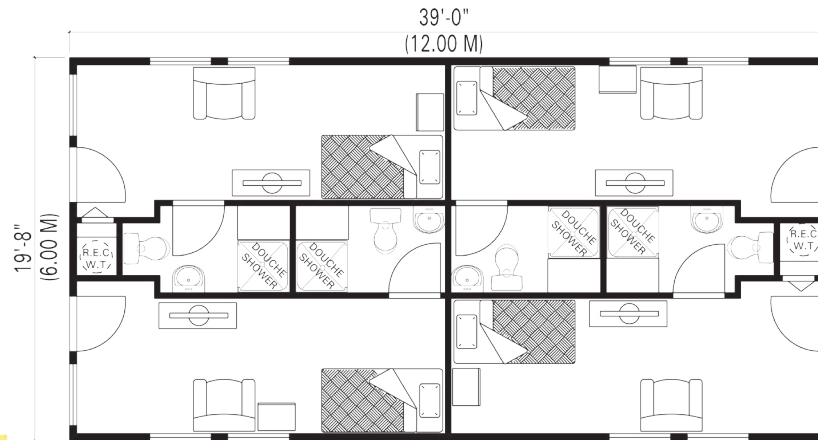
E3 Series



40 D1800



40 D1822



40 D1444



habitaflex.com
HABITAFLEX[®]
 QUICK BUILDING SOLUTIONS



Habitaflex Dormitories

E3 Series

Dormitories (40 D1800, D1444, D1822, DK1622, D1844)

Structure:

- Built with structural insulated panels
- Expanded polystyrene insulation without CFCs
- Rustic grooved board finish on exterior walls (Choice of colors)
- Oven dried wood carpentry
- Pre-painted galvanized steel roofing
- White PVC sliding windows
- Insulated steel door

Interior Finish:

- Floor : Dyed and varnished Oriented Stanboard (OSE with 24" x 24" (609x609mm) grooved tiles
- Natural grooved Oriented Stanboard Board (OSB)

Electricity:

- Independent electrical heat system in every room
- 1 Cable/Phone jack outlet per room

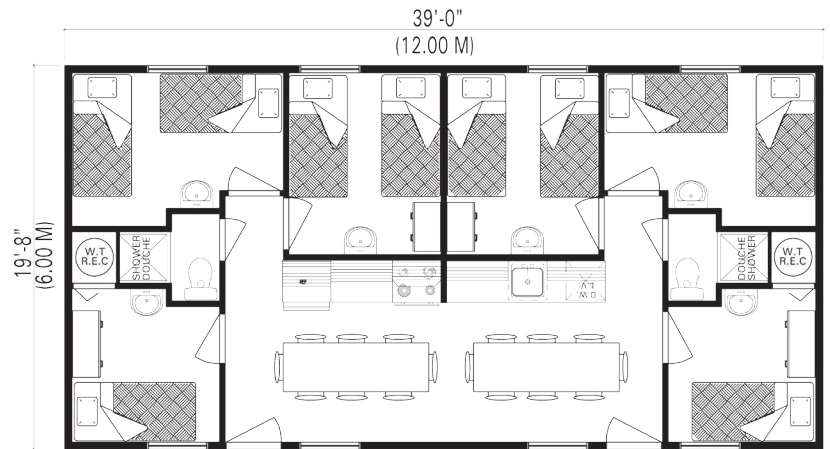
Plumbing:

- Toilet & sink (D1710)
- Private bathroom with toilet, sink and shower 32" x 32" (813x813mm) (D1444, D1222)
- Quick connect water inlet
- 1/2" (12.7 mm) Pex water lines & ABS drainage piping

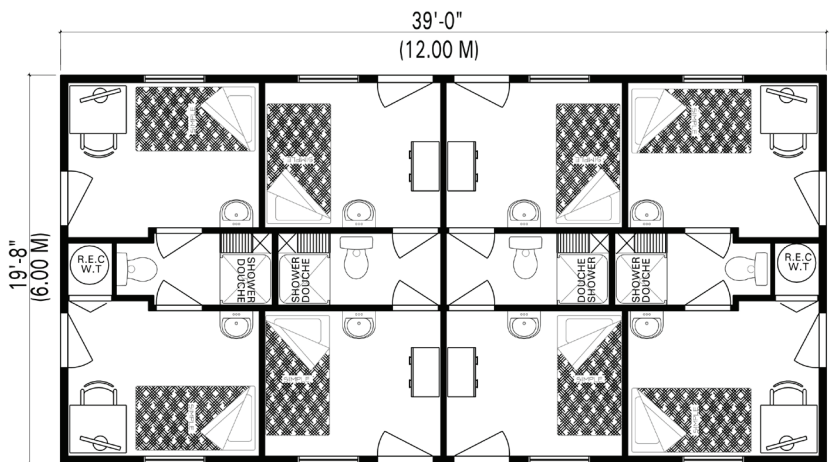
Options Available:

- «Quick Connect» Electric system
- 220V Electricity
- «Far North» Insulation
- Double or triple paned windows with argon
- Soundproof partitions
- Solid doors with acoustic door seal
- Natural pine board interior finish

* Furniture not included and are only indicative of potential space usability



40 DK1622



40 D1844

Distributor