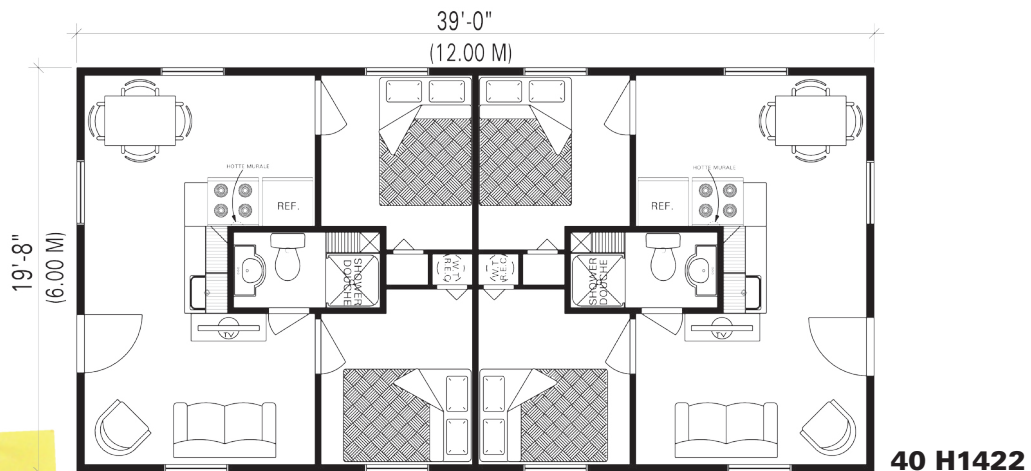
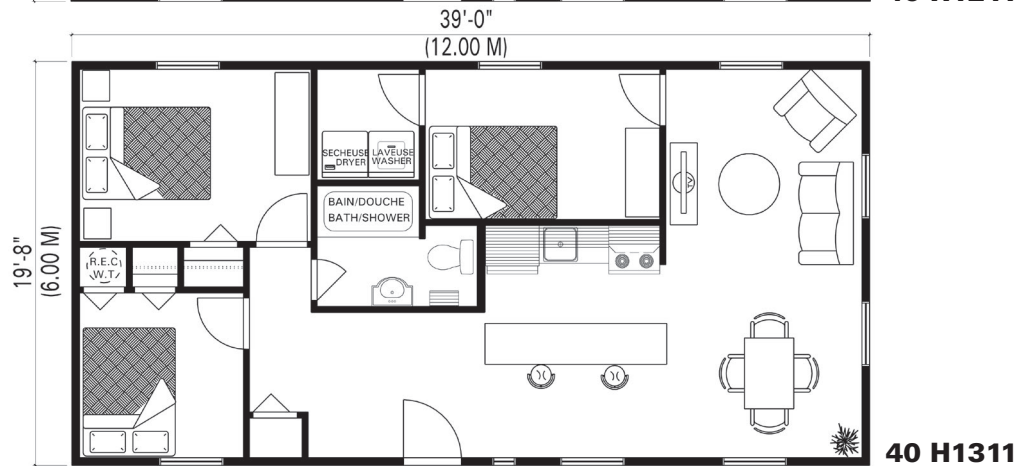
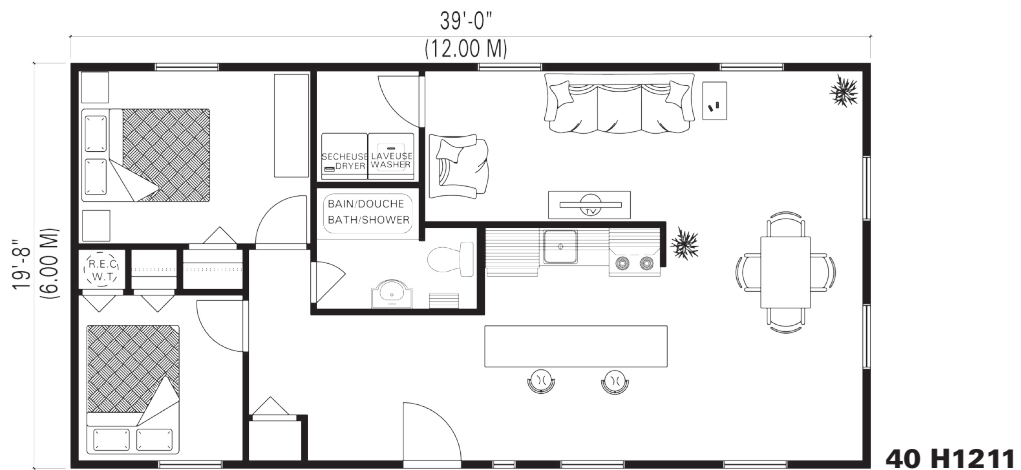


Habitaflex Housing Units

E3 Series



Habitaflex
+ freight
cost!!!



Other building
solutions...

habitaflex.com

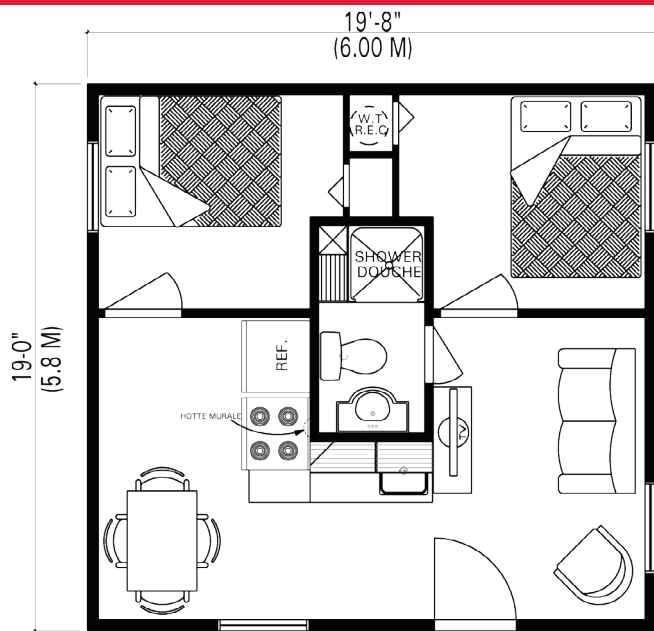
HABITAFLEX[®]

QUICK BUILDING SOLUTIONS

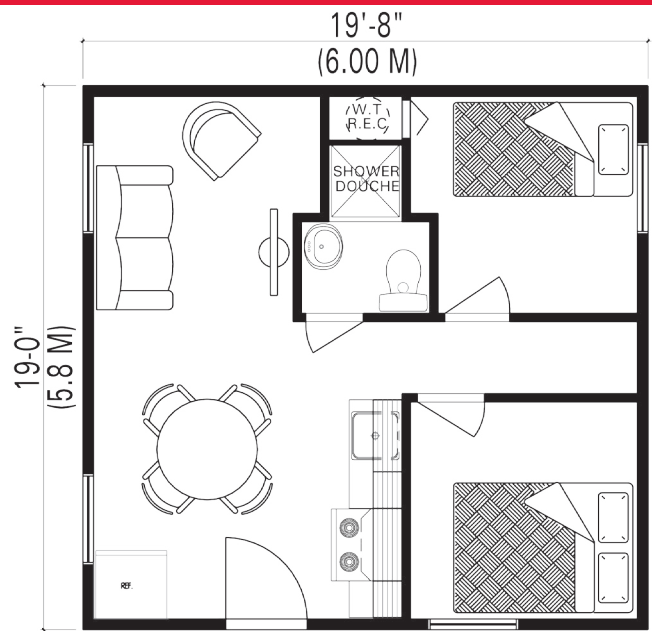


Habitaflex Housing Units

E3 Series



20 H1211



20 H2211

Housing Units (20 H1211, 20 H2211, 40 H1211, 40 H1311, 40H1422)

Structure:

- Built with structural insulated panels
- Expanded polystyrene insulation without CFCs
- Rustic grooved board finish on exterior walls (Choice of colors)
- Oven dried wood carpentry
- Pre-painted galvanized steel roofing
- White PVC sliding windows
- Insulated steel door

Interior Finish:

- Floor : Dyed and varnished Oriented Strand board (OSB), with 24" x 24" (609x609mm) grooved tiles
- Natural grooved Oriented Strand board (OSB)

Electricity:

- Independent electrical heat system in every room
- 1 Cable/Phone jack outlet room

Plumbing:

- Toilet, Sink, Bath or Shower (32" x 32" (813 x 813mm))
- Quick connect water inlet
- 1/2" (12.7 mm) Pex water lines & ABS drainage piping

Options Available:

- «Quick Connect» Electric system
- 220V Electricity
- «Far North» Insulation
- Double or triple paned windows with argon
- Soundproof partitions
- Solid doors with acoustic door seal
- Borate treatment of the structure
- Panoramic windows
- Natural pine board interior finish
- Natural gypsum Wallboard interior finish (plastering must be completed on site)

Distributor

* Furniture not included and are only indicative of potential space usability